



User Guide for proTextor

Saving lives one text at a time

Table of Contents

Launcher Screen.....	3
Main Screen	4
Overrides Screen.....	5
Blocking Screen	6
Logging Screen	7
Change Password Screen	8
Remote Commands.....	9

To start proTextor, click on the proTextor icon in your Home Screen. If this is your first time starting proTextor, then proTextor will ask to enter a new username and password.



The screenshot shows the proTextor Launcher Screen. At the top is the proTextor logo. Below it are two input fields: "User Name" and "Password". The "User Name" field is empty, and the "Password" field is also empty. Below the input fields, the text "First time login detected." is displayed in blue. Below that, the text "Please enter new User Name and Password." is displayed in blue. At the bottom, there are two buttons: "Login" and "Cancel".

Launcher Screen

Login credentials are needed to change the preferences and threshold speed. If this is the first time logging in, then the software will ask for new user name and password.

In addition, the Launcher screen is needed to gain access to proTextor when it is running.



The screenshot shows the proTextor Launcher Screen during initialization. At the top is the proTextor logo. Below it are two input fields: "User Name" and "Password". The "User Name" field contains the text "jsmith". The "Password" field contains six asterisks "*****". Below the input fields, the text "Initializing Protector ..." is displayed in blue. At the bottom, there are two buttons: "Login" and "Cancel".

proTextor when starting up. You will see the following status messages:

- Initializing proTextor
- Loading GPS ...
- Loading phone tracker ...
- Loading SMS tracker ...
- Loading UI ...



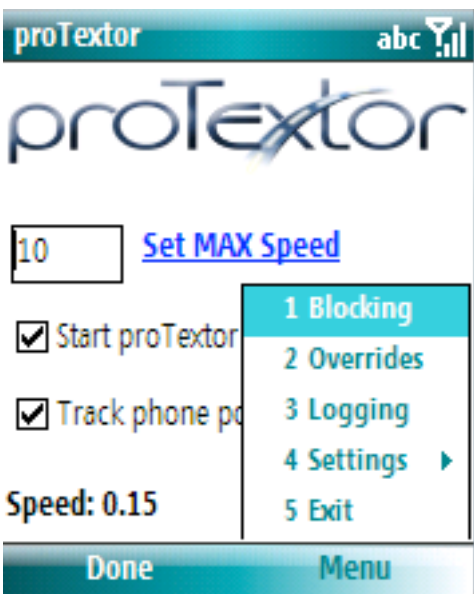
Main Screen

This is where a guardian or administrator of proTextor can set the MAX speed limit, start proTextor, and track the phone position. By default proTextor sets the MAX speed to 10mph, to change the MAX Speed, enter a speed and click on the “Set MAX Speed” link. If driving over 10mph in this case, then all incoming and outgoing texts and calls will be blocked.

The “Start proTextor” checkbox must be ON in order for texts and calls to be blocked; else the texts and calls come thru. The “Track phone position” checkbox provides the ability for reverse geo-coding, i.e. sends a text message to the

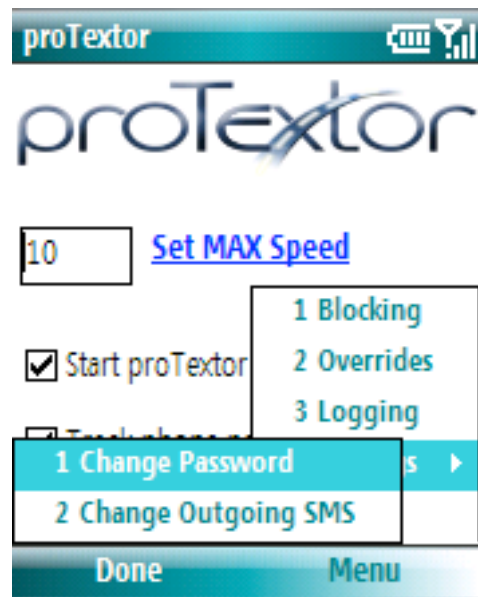
guardian displaying the current address of the phone location. More on this in the section “Remote Commands”

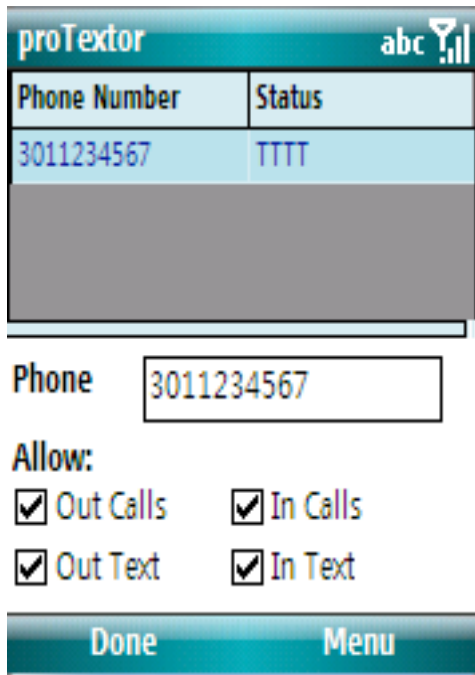
The “Done” button minimizes and runs proTextor in the background. This is the button the guardian or administrator needs to press when there done configuring proTextor.



The “Menu” button will pull up a submenu with configuration options, such as: Blocking, Overrides, Logging, Settings and Exit.

“Menu→Exit” stops proTextor from blocking incoming and outgoing texts and calls.





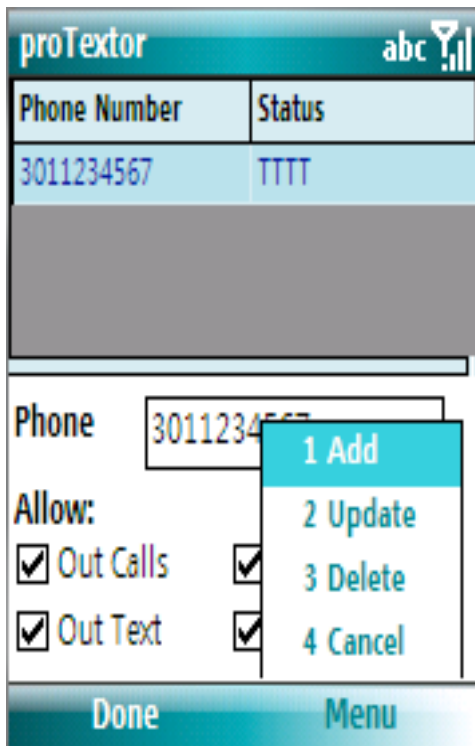
Overrides Screen

This screen allows for text and cell overrides. proTextor will allow text messages and calls to go through if an entry exists here and if the status is "TTTT".

The table has two columns, the Phone Number and the Status. The Phone Number is the override and the Status indicates if calls and texts are allowed. The meaning of Status:

- position 1 --> Outgoing Calls (T=True, F=False)
- position 2 --> Incoming Calls (T=True, F=False)
- position 3 --> Outgoing Text (T=True, F=False)
- position 4 --> Incoming Text (T=True, F=False)

The checkboxes indicate if the calls or text can be overridden or not. For example, if "Out Calls" is set to false, then outgoing calls cannot be made.

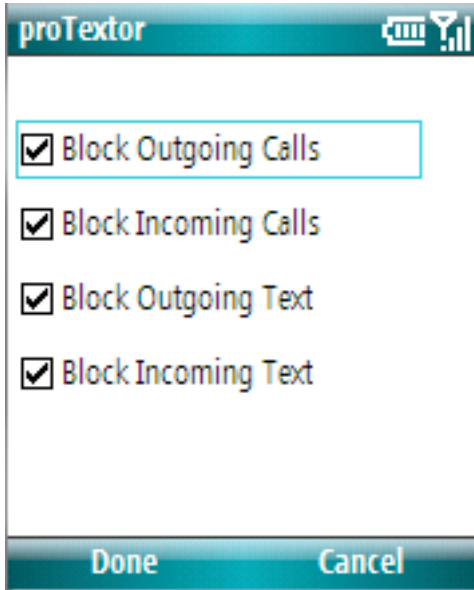


To add an override, focus on the Phone textbox field and enter the number, then select "Menu→Add"

To delete an override, select the override from the table and then select "Menu→Delete"

To update an override, select the override from the table, make your changes and then select "Menu→Update"

The "Done" button returns back to the Main Screen.



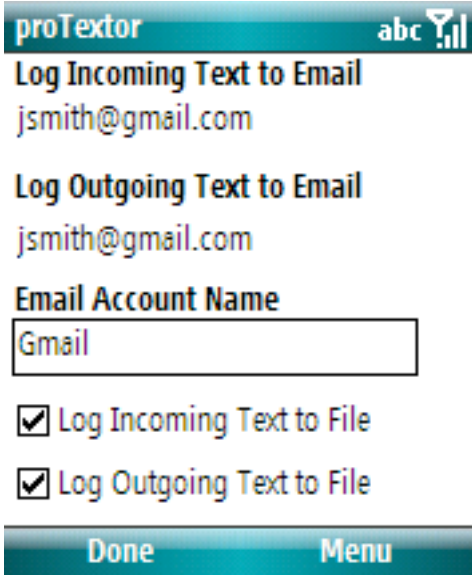
Blocking Screen

This screen allows you to block or unblock incoming and outgoing text messages and cell calls.

For instance, a guardian can set up the phone to allow incoming and outgoing calls and block all text usage.

Note: Clicking on the checkbox automatically saves you're setting.

The "Done" and "Cancel" buttons return back to the Main Screen.



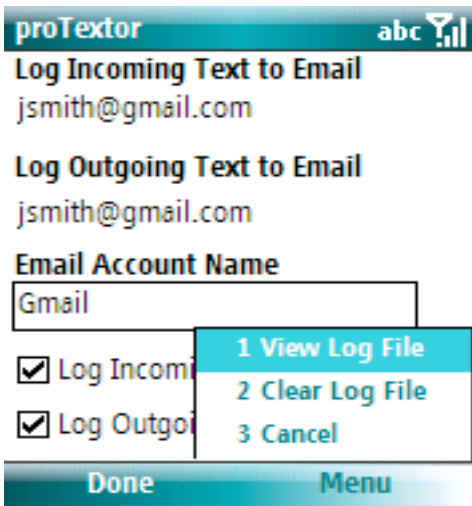
Logging Screen

This is where the guardian can set up logging when the user of the phone receives or sends text.

proTextor does not need to be on for this to work; if an email is specified then the logging system will send the text messages to the email account.

The “Done” button saves the settings and returns back to Main Screen.

Note: An email account needs to be setup on the phone before setting these options. Take note of the email account name when setting up your email and then enter it in the text box field “Email Account Name”

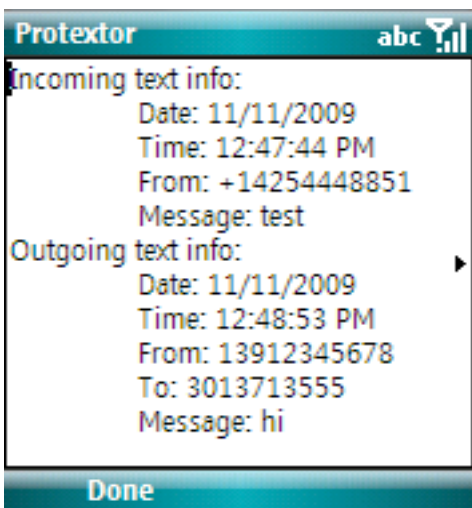


The guardian also has the option to view or clear the messages from the phone.

Selecting “Menu→View Log File” displays a dialog with the contents of the log file as shown below.

Selecting “Menu→Clear Log File” clears the log.

The “Cancel” menu item returns to the Main Screen without saving.



View Log File contents

The “Done” button returns back to Logging Screen.

Change Password Screen

Allows the guardian to change the user name password.

The “Done” saves the new user name and password and returns back to Main Screen.

The “Cancel” button returns to the Main Screen without saving.

Change Outgoing SMS

Allows the guardian to change the outgoing SMS message.

The “Done” saves the new outgoing SMS message returns back to Main Screen.

The “Cancel” button returns to the Main Screen without saving.

Remote Commands

The guardian can send several remote text commands while the user is in transit. For example the guardian can send override text calls to the users phone. The format of the command (case insensitive) is OBC <command> <parameters>.

OBC is for “Override Block Command”

Examples:

- “OBC BIT 1 or 0” – BIT (Block Incoming Text) if 1, then block incoming text else allow
- “OBC BOT 1 or 0” – BOT (Block Outgoing Text) if 1, then block outgoing text else allow
- “OBC BIC 1 or 0” – BIT (Block Incoming Calls) if 1, then block incoming calls else allow
- “OBC BOC 1 or 0” – BOC (Block Outgoing Calls) if 1, then block outgoing calls else allow
- “OBC MSG pull over now” – MSG (Message) this sends a popup message to the users phone saying “pull over now”
- “OBC WAY” – WAY (Where are you) returns the street address of the current phone’s position based on reverse geo-coding
- “OBC PXT 1 or 0” – this turns of proTextor: 0 to turn off, and 1 to turn back on. The settings will be stored even after a reboot of the phone. So, if you sent the command to turn off proTextor and then after a reboot, proTextor will still be set to off, unless you send the command to turn it on again.